

Item description/product images



Description

Material:

Housing polyamide, glass-bead reinforced.
POM rollers.

Version:

Housing and rollers black.

Note:

The roller elements are suitable for the manufacture of roller conveyors in any length and width. Suitable for type B and I aluminium profiles. Due to the sprung guide tabs on the bottom, the elements will fit any 8 and 10 slots.

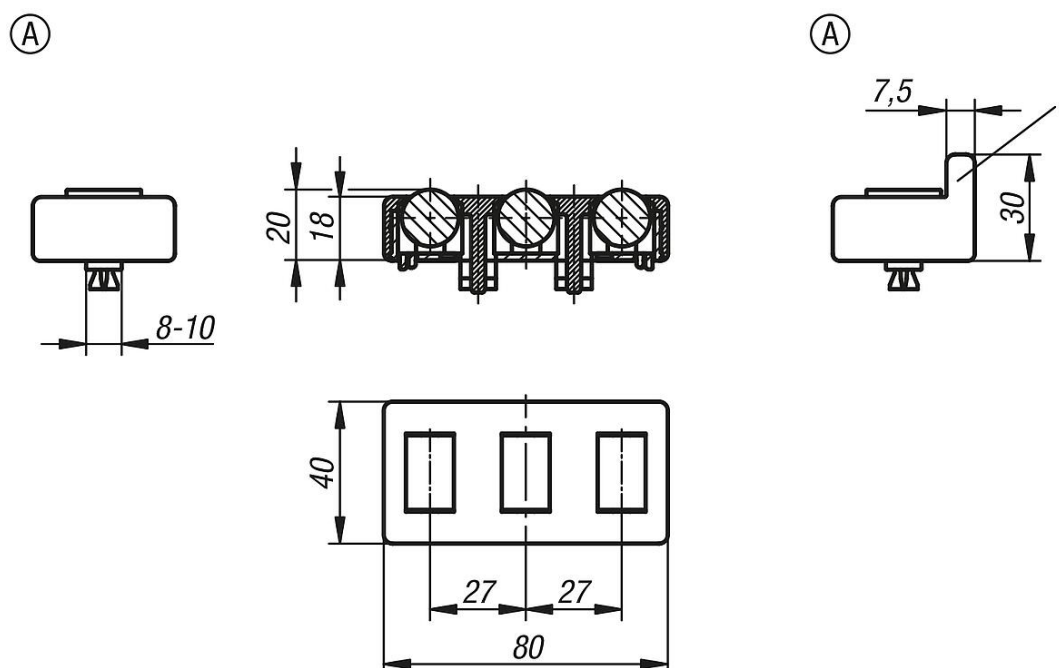
Attachment Form A

Insert the bottom of the housing and rollers into the slot on the aluminium profile. Bring the top of the housing and the integrated expansion pins into position and press down. The expansion pins and clamps fasten and secure the roller element in the slot.

Drawing reference:

1) lateral guide

Drawings



Overview of items

Order No.	Form	Version 1	Slot width	Load capacity N
10450-1000	A	without lateral guide	8/10	100
10450-1100	A	with lateral guide	8/10	100

Overview of items
