

Item description/product images

**Description****Product description:**

Support elements reduce workpiece vibrations during machining.
All moving parts are sealed against the ingress of coolant, dust and swarf.

Material:

Carbon steel.

Version:

Body black oxidised. Thrust pin tempered and black oxidised.

Type of operation:

Actuated using an impact driver with adjustable torque or manually using a clamping key.

With automated operation, e.g. using impact drivers with adjustable torque, no more than 50% of the specified maximum tightening torque or clamping force may be used for loosening and tightening.

Advantages:

Automation-compatible
High clamping forces
Rapid clamping

Supplied with:

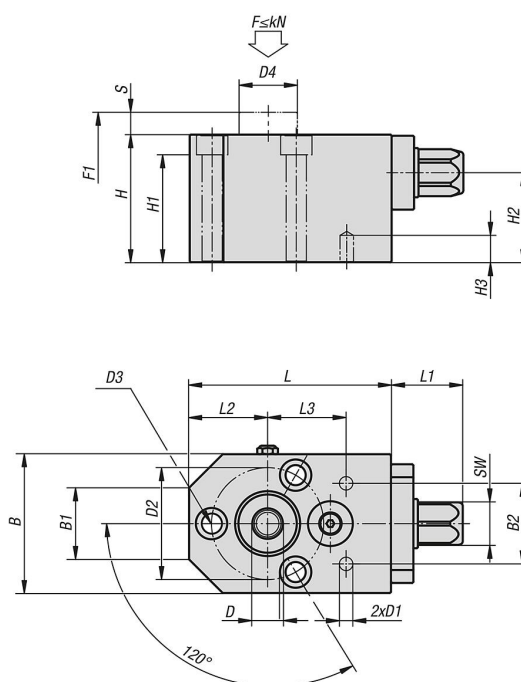
02334-10-05012: 2x locating pins Ø 6 (h7) x 20, protective plug for tapped holes.

02334-10-10016: 2x locating pins Ø 8 (h7) x 25, protective plug for tapped holes

Accessory:

Self-aligning pads 02000.
Positioning feet 02040.
Positioning feet 022041.
Rest pads 02153.

Drawings



Overview of items

Order No.	B	B1	B2	D	D1	D2	D3 for screw to DIN 912	D4	H	H1	H2	H3	L	L1	L2	L3	F= Spring strength (N)	F max. kN	Tightening torque max. Nm	Travel S	SW
02334-10-05012	62	32	36	M12x24	6	50	M8	26	57	48	40	12	90	32	35	35	15-30	5	40	10	19
02334-10-10016	75	35	48	M16x32	8	60	M10	33	72	61	50	16	115	42	42	45	15-35	10	80	10	19