

Item description/product images

**Description****Material:**

Polyamide PA6.

Version:

black.

Note:

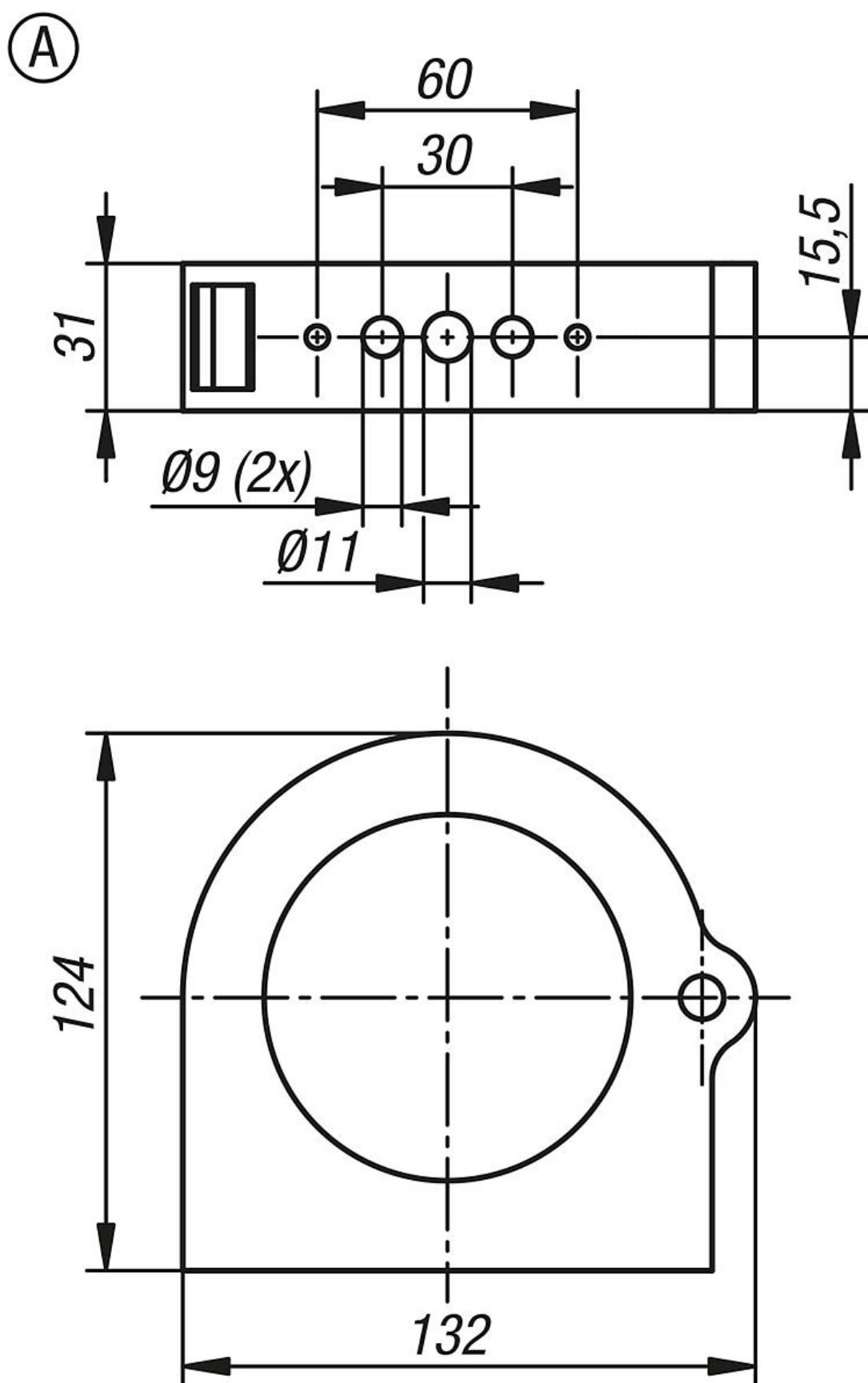
The low-friction cable guide enables the energy chain/corrugated pipe to run smoothly and evenly through the guide.

Temperature range:

-45 °C to +105 °C (briefly up to +150 °C).

Assembly:

The low-friction guide is opened and closed tool-free via a plastic latch. The inner jaws consist of two identical half shells that are fitted on the energy chain via hole-pin connections. The jaws fitted around the energy chain are inserted into the connecting element and ensure that the energy chain runs smoothly.



Overview of items

Order No.	Form	Form definition	Nominal size
80855-08-07011	A	standard	70