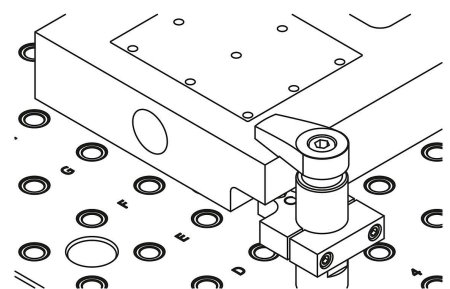
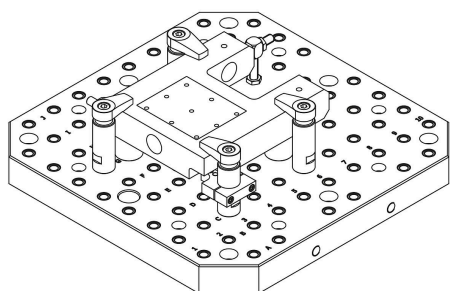


## Item description/product images

**Description****Product description:**

The intermediate support for hook clamps can be mounted directly on the clamping element as an intermediate support.

Space can be saved by attaching the intermediate support to the clamping element and clamping workpieces on workpiece contours.

**Material:**

Steel.

**Version:**

Black oxidised.

**Note:**

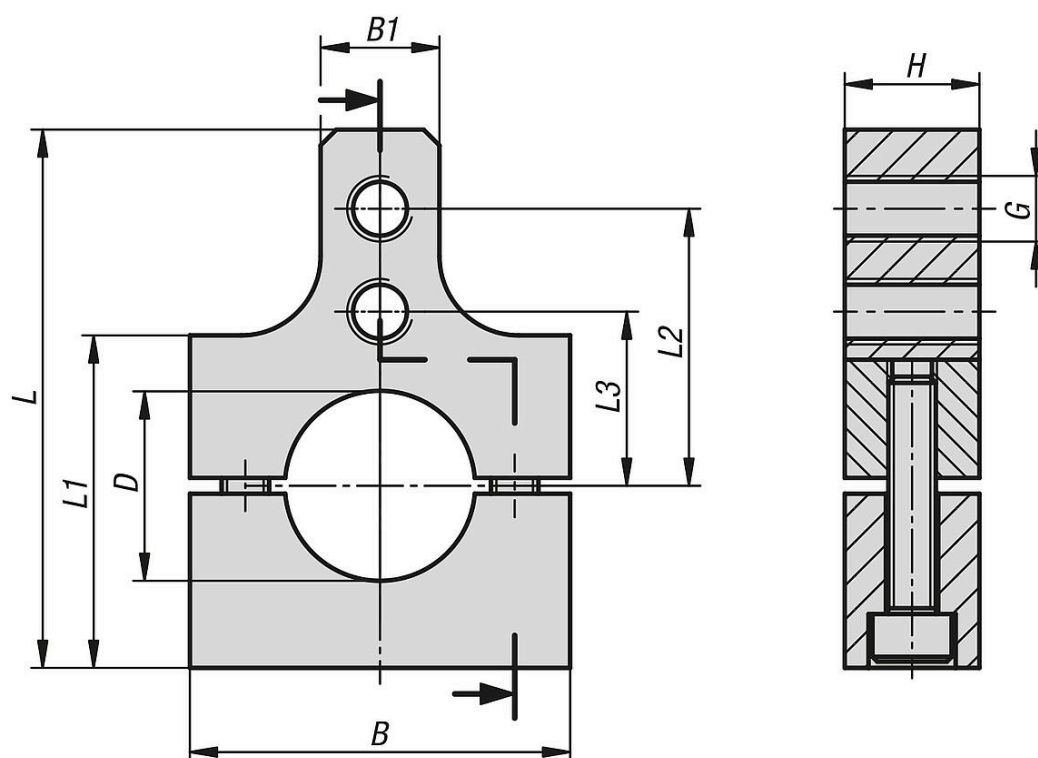
Before use, the intermediate support must be fastened using the supplied M6 10.9 cap screws.

**Supplied with:**

1x body

2x M6 10.9 cap screws

## Drawings



## Overview of items

Order No.	L	B	H	B1	D	G	L1	L2	L3
04378-50-2408	68	48	17	15	24	M8	42	35	22
04378-50-2508	68	48	17	15	25	M8	42	36	23
04378-50-3208	75	58	17	15	32	M8	50	40	27
04378-50-4012	95	68	17	20	40	M12	60	54	34
04378-50-5012	105	73	17	20	50	M12	70	59	39