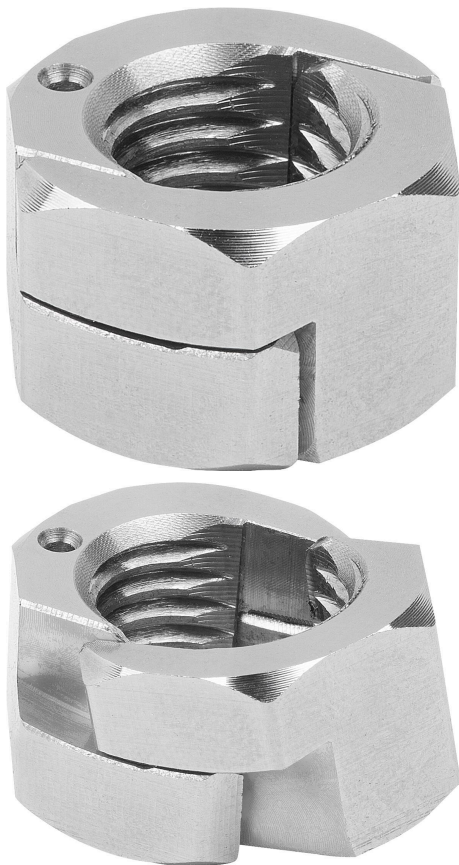


Item description/product images

**Description****Product description:**

Two-part hex nuts enable particularly rapid and easy installation - even with long threaded rods, hard-to-reach places or damaged threads. They can be fitted from the side and tightened without the need to remove other components. Ideal for maintenance in corrosive environments or applications with limited processing options. The two halves are secured by a lock, but can be separated using the assembly tool. The strengths are in accordance with industry standards.

Material:

Carbon steel.

Version:

Bright.

Advantages:

- Saves time by repetitive assembly, pre-assembly and set-ups.
- Installation possible despite inaccessibility.

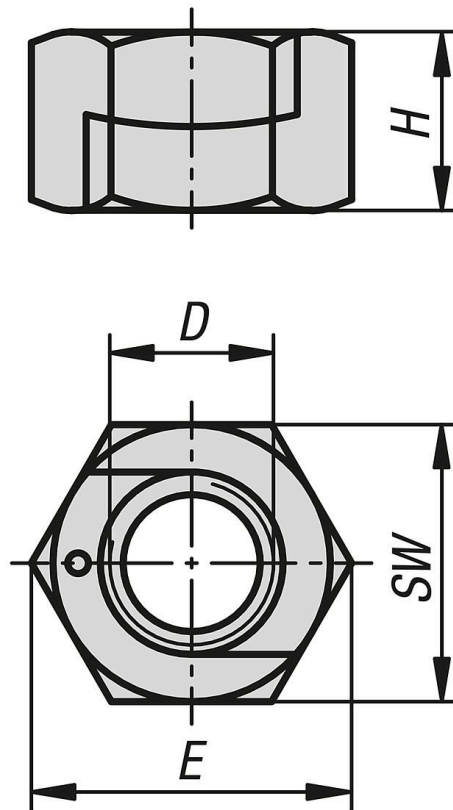
On request:

Other sizes and materials.

Accessory:

07240-15 assembly tool.

Drawings



Overview of items

Hexagon nuts, QT steel, two-part, without collar

Order No.	D	E	H	SW
07240-10-106	M6	11	6	10
07240-10-108	M8	14	8	13
07240-10-110	M10	19	10	17
07240-10-112	M12	21	12	19
07240-10-116	M16	27	16	24
07240-10-120	M20	33	20	30
07240-10-124	M24	40	24	36