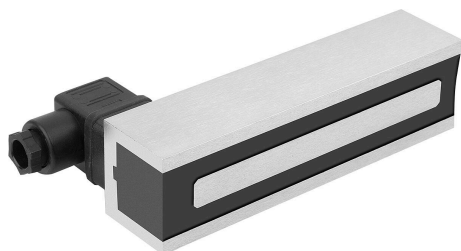


## Item description/product images

**Description****Material:**

Housing steel.

Coil housing plastic.

Permanent magnet hard ferrite or NdFeB.

**Note:**

These permanent electromagnets can hold workpieces in place permanently. By supplying current (direct current), the coil in the core neutralises the magnetic field or can increase the magnetic force (depending on the current direction). After switching off, the effect is cancelled again.

The permanent electromagnets are attached using the threads on the back. The power connection is made via the DIN valve connector as per EN 175301-803 (formerly DIN 43650). PINs are installed on this to attach wires directly.

The specified magnetic forces may be lower depending on the material thickness and the surface finish of the material.

**Technical data:**

Voltage: 24V DC.

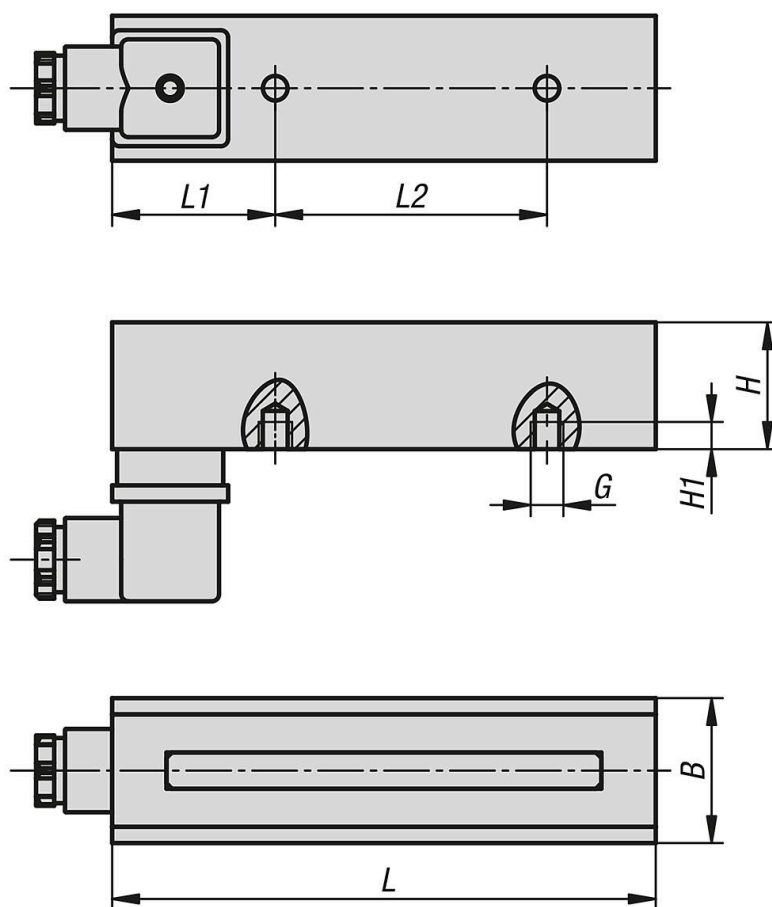
Rating: up to IP 65.

Temperature range: up to 180 °C (insulation class H).

**Application:**

The permanent electromagnets are used for holding, supporting and fixating ferromagnetic workpieces, especially where long holding times without energy consumption is required.

## Drawings



## Overview of items

## Magnets, rectangular (permanent electromagnets)

Order No.	B	G	H	H1	L	L1	L2	N	Magnetic force N	Nom. tension VDC	W
09133-01004035	40	M8	35	6,5	100	45	35	2	850	24	9
09133-01504035	40	M8	35	15	150	45	75	2	1650	24	11
09133-02004035	40	M8	35	15	200	40	120	2	2300	24	13
09133-03004035	40	M8	35	15	300	75	150	2	4000	24	19
09133-04004035	40	M8	35	15	400	110	180	2	6000	24	28
09133-05004035	40	M8	35	15	500	100	300	2	6600	24	40