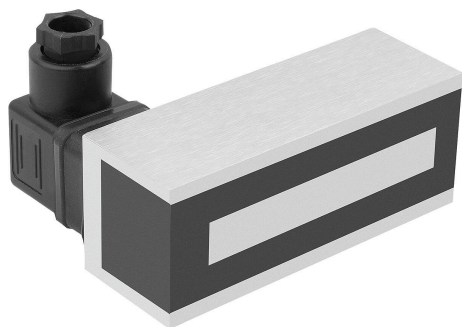


Item description/product images

**Description****Material:**

Housing steel.

Coil housing plastic.

Note:

The electromagnets are operated with direct current. This generates a magnetic field through the coil in the core. The force field disappears again after the current is switched off.

The electromagnets are attached using the threads on the back. The number of tapped holes differs. The distance L2 is the respective distance between the tapped holes.

The power connection is made via the DIN valve connector as per EN 175301-803 (formerly DIN 43650). PINs are installed on this to attach wires directly.

The specified magnetic forces may be lower depending on the material thickness and the surface finish of the material.

Technical data:

Voltage: 24V DC.

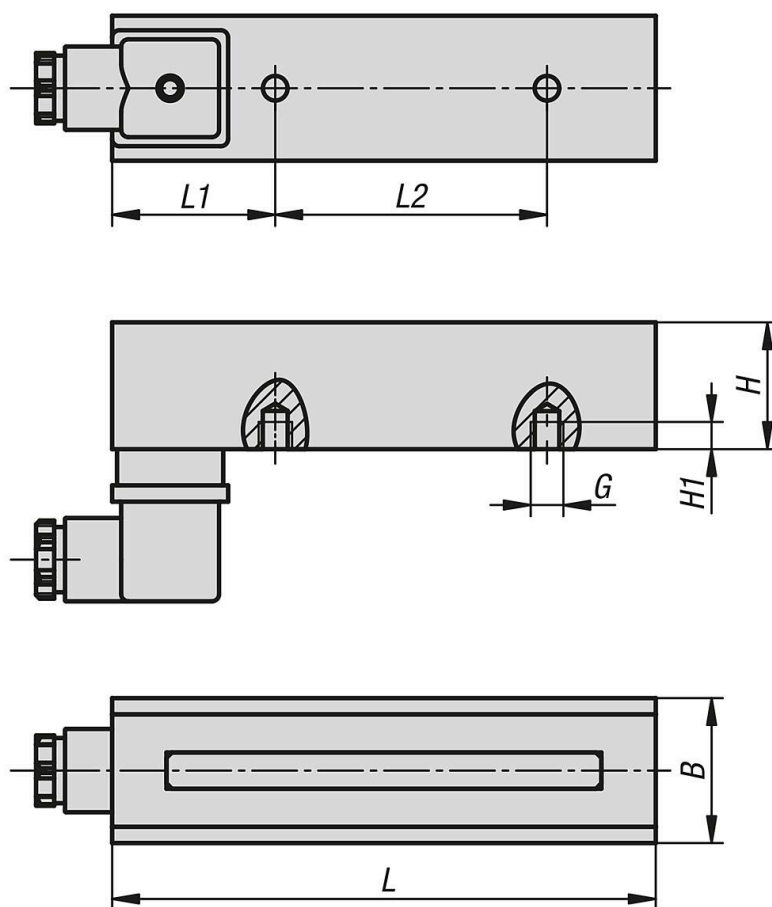
Rating: up to IP 65.

Temperature range: up to 180 °C (insulation class H).

Application:

The electromagnets are used for holding, supporting and fixating ferromagnetic workpieces.

Drawings



Overview of items

Magnets, rectangular (electromagnets)

Order No.	B	G	H	H1	L	L1	L2	N	Magnetic force N	Nom. tension VDC	W
09131-01004035	40	M8	35	6,5	100	45	35	2	850	24	9
09131-01504035	40	M8	35	15	150	45	75	2	1650	24	11
09131-02004035	40	M8	35	15	200	40	120	2	2300	24	13
09131-03004035	40	M8	35	15	300	75	150	2	4000	24	19
09131-04004035	40	M8	35	15	400	110	180	2	6000	24	28
09131-05004035	40	M8	35	15	500	100	300	2	6600	24	40
09131-06004035	40	M8	35	15	600	100	100	5	7700	24	46
09131-07004035	40	M8	35	15	700	135	215	3	9200	24	54
09131-08004035	40	M8	35	15	800	100	150	5	10600	24	62