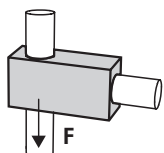
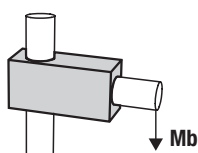


Load specifications - Aluminium tube clamps

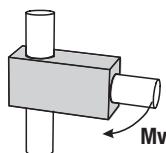
ATTENTION! This information does not constitute a quality guarantee or a warranted product characteristic. These are non-binding guide values that may not be achievable in individual cases due to differing application conditions, e.g. temperature or surface finish of the profiles being clamped.



Magnetic force F [KN]



Flexural torque Mb [Nm]



Torsional torque Mv [Nm]

Round design

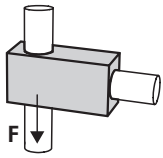
Size	18			30			40			50			60		
	F	Mb	Mv	F	Mb	Mv	F	Mb	Mv	F	Mb	Mv	F	Mb	Mv
29000	2,2	126	24	5,8	368	84	4,8	750	43	12,7	1025	368	-	-	-
29004	-	-	-	-	-	49	5,0	335	43	-	-	-	-	-	-
29006	1,1	189	20	6,6	447	104	4,3	1365	104	12,1	900	217	-	-	-
29008	-	-	-	6,6	494	41	6,6	300	300	10,6	409	217	-	-	-
29010	-	-	-	5,7	302	87	7,5	418	121	8,7	1375	150	-	-	-
29014	1,1	128	21	4,9	200	95	8,9	504	254	11,6	750	1025	-	-	-
29022	-	-	-	1,9	435	-	4,7	698	-	2,8	1000	-	15	2400	-
29024	3,6	28	9	4,9	91	94	6	267	181	-	-	-	-	-	-
29026	3,6	28	9	4,9	91	94	6	267	181	-	-	-	-	-	-
29028	2,7	38	15	6	133	85	5,8	264	138	-	-	-	-	-	-
29029	2,7	28	15	4,9	83	94	5,8	231	138						
29030	-	40	50	-	110	101	-	562	635	-	-	-	-	-	-

Angular design

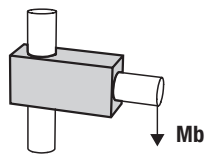
Size	30			40		
	F	Mb	Mv	F	Mb	Mv
29000	6,9	420	92	9,0	1148	103
29002	3,0	393	280	2,8	338	692
29008	3,3	413	345	4,3	464	546
29012	5,6	125	296	2,9	290	623
29014	6,8	429	117	6	1190	152
29016	5,2	270	381	3	1247	955

Flange Clamps

Size	30			40			50		
	F	Mb	Mv	F	Mb	Mv	F	Mb	Mv
29104-11	2,5	109	134	4,2	102	451	2,6	297	563
29104-13	1,9	-	-	4,2	-	-	2,6	-	-
29105-11	3,1	-	-	3,5	-	-	5,8	-	-



Magnetic force F [KN]



Flexural torque Mb [Nm]



Torsional torque Mv [Nm]

Joints

Size	18			30			40			50		
	F	Mb	Mv	F	Mb	Mv	F	Mb	Mv	F	Mb	Mv
29032 Form A	2,2	25	7	5,8	85	15	6	233	38	11,9	244	143
29032 Form B	2,2	27	16	5,8	85	148	6	223	376	11,9	317	695
29034 Form A	1,1	25	7	4,8	85	15	6	233	38	12	244	143
29034 Form B	1,1	27	16	4,8	85	148	6	300	300	12	260	400
29036 Form A	2,2	25	7	5,8	85	15	6	233	100	12	244	143
29036 Form B	2,2	27	16	5,8	69	82	7,4	240	470	7,8	363	695